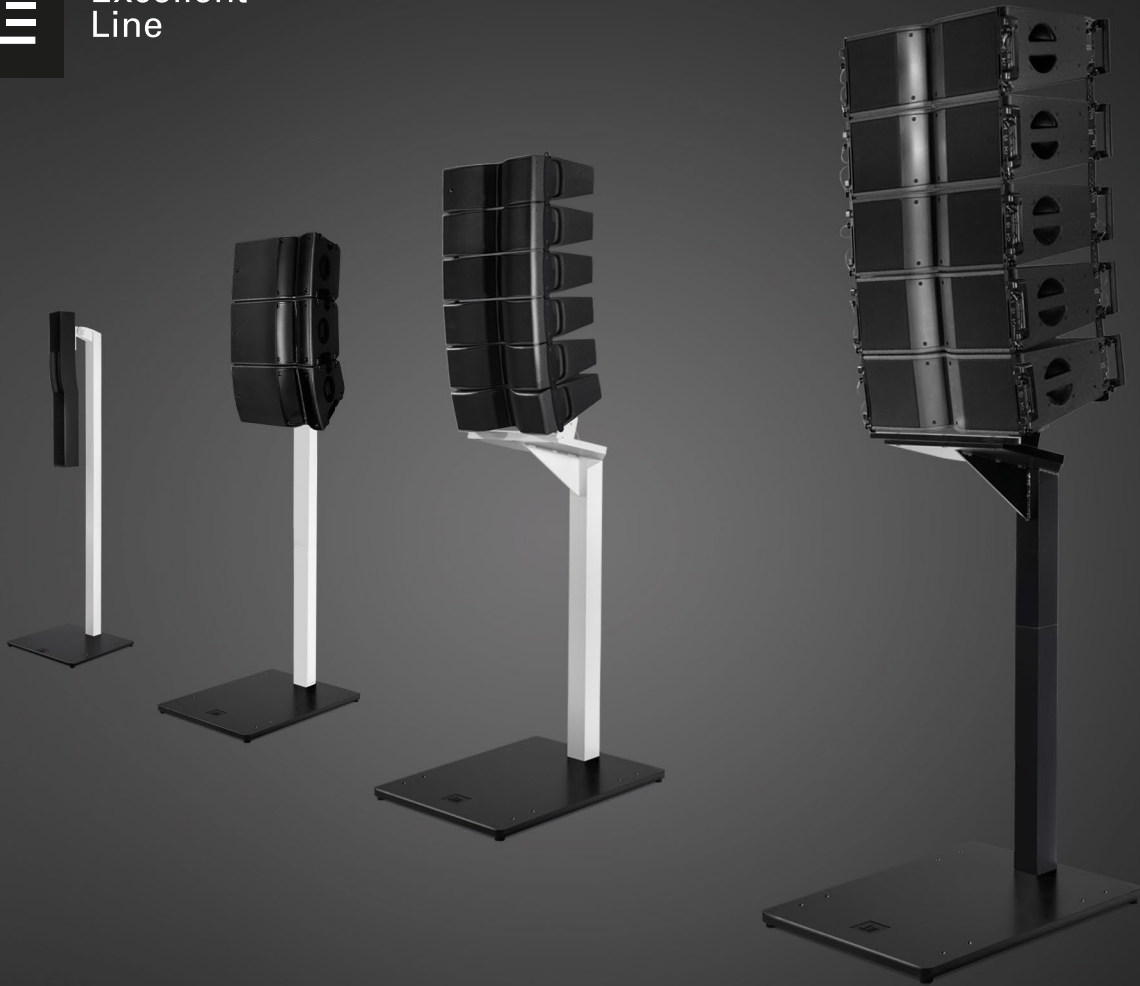





Excellent  
Line



Alpha  
Line for L-Acoustics



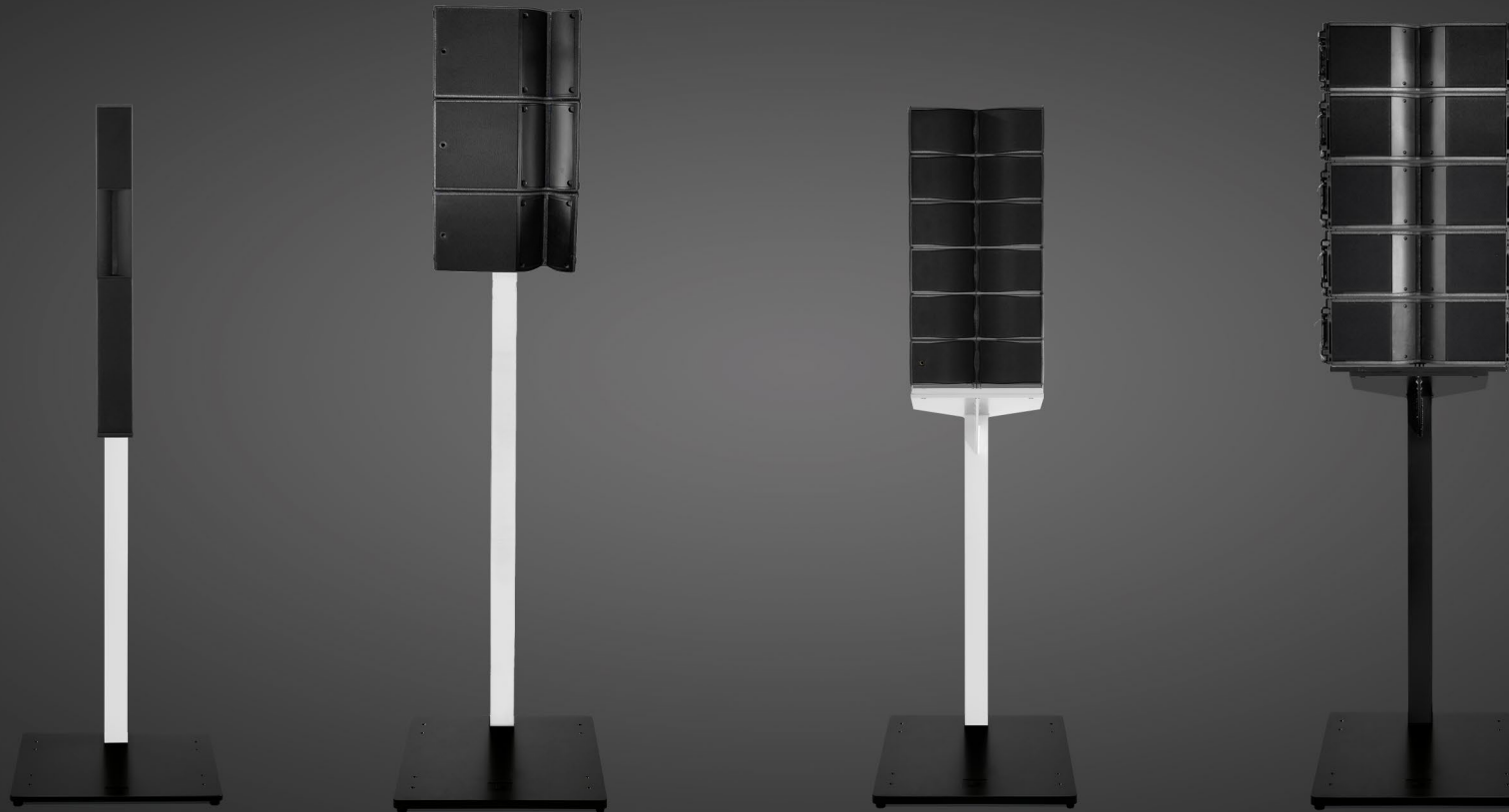
# Functional Specialized

The Excellent Line offers the perfect balance between purist design and functional technology for first-class atmosphere.

The new Excellent Line Alpha was specially developed for the high-end entertainment sector, making it the perfect complement to L-Acoustics loudspeakers.

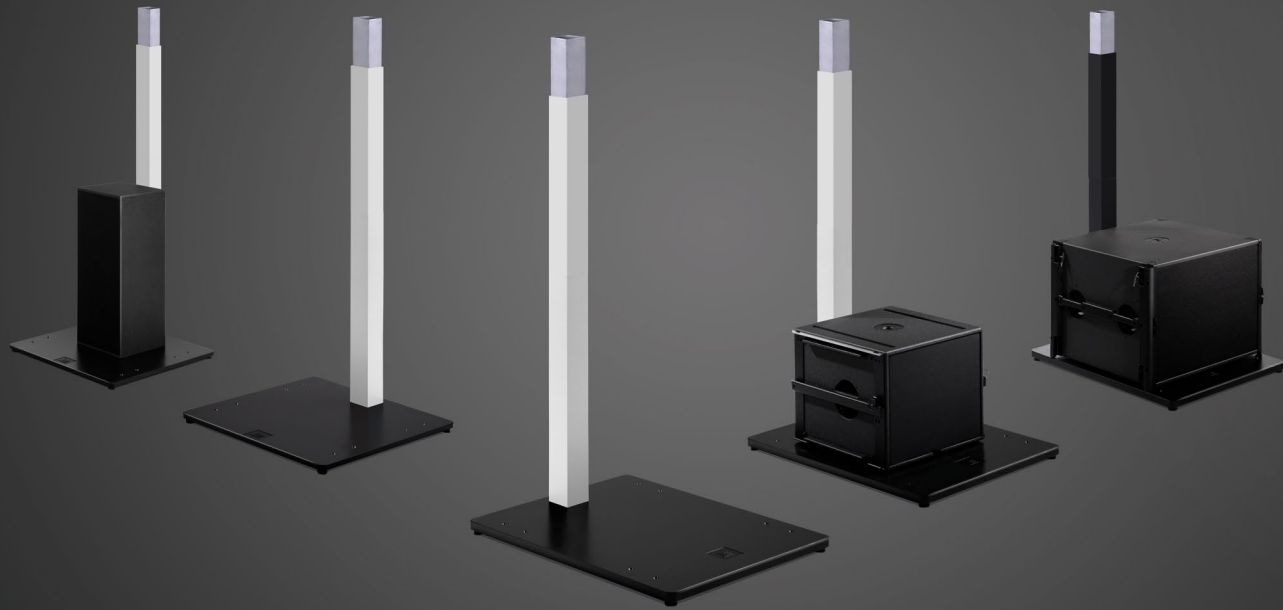
Alpha Line for L-Acoustics

Syva, A10,  
Kiva II and Kara.



The Excellent Line Alpha is the stand system for L-Acoustics small and medium-sized speaker systems. The solid baseplate can support L-Acoustics Syva Low/Sub, SB15 or SB18 subwoofers and, thanks to eight additional drill holes, can also be mounted to supporting structures. All components allow potential equalisation to be carried out.

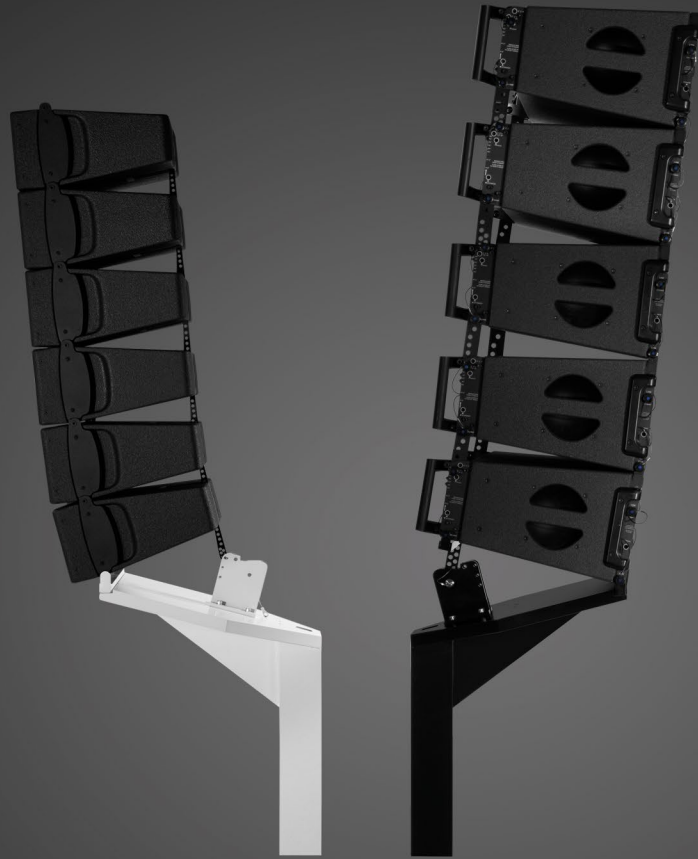
The BP800 and BP1000 baseplates  
can house L-Acoustics  
Syva Low/Sub, SB15 and  
SB18 subwoofers.



The adapter head  
for the L-Acoustics Syva  
can be tilted by up to  $-10^\circ$ .

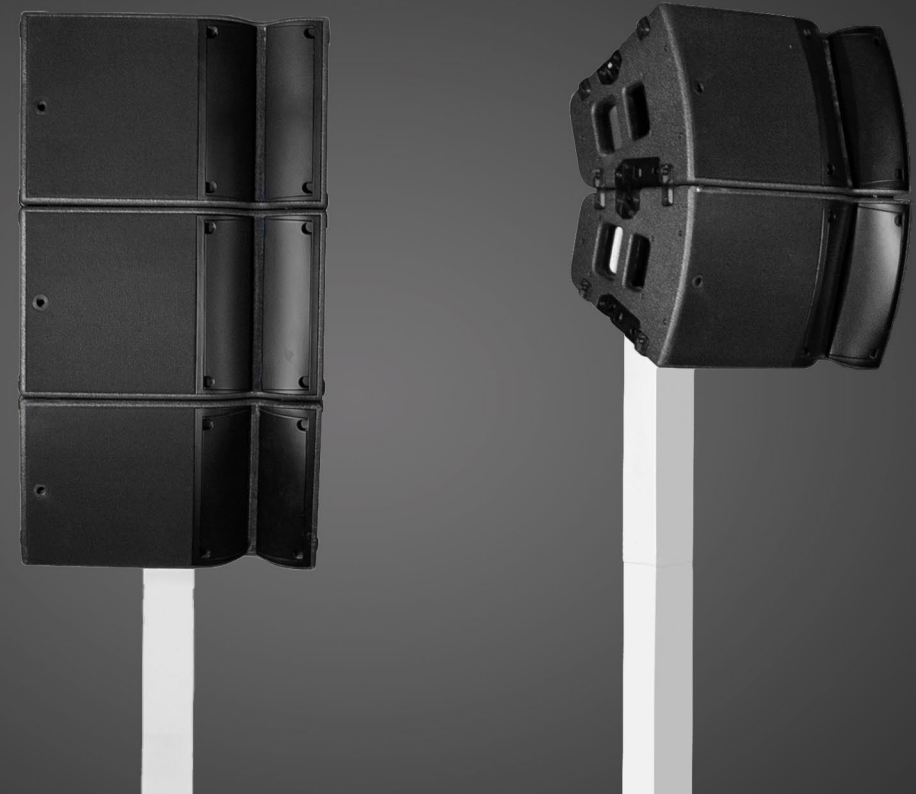
A special cover also conceals  
the rotating mechanism.





The adapter head  
for the L-Acoustics  
A10 (Focus and Wide) –  
combine up to 3 elements.

The adapter head  
for the L-Acoustics Kiva II  
and Kara allows the first module  
in the array to be tilted.



# DesignStand Alpha

for L-Acoustics



**Applications**  
indoor stand for  
L-Acoustics  
loudspeakers



**Height Options**  
Permitted  
total height  
400 cm



**Adapter Heads**  
adapter heads  
for L-Acoustics Syva,  
Kiva II, Kara and  
A10 (Focus/Wide)



**Capacity**  
max. recommended  
load 180 kg



**Baseplates**  
BP1000 and BP800  
with decentralized  
mount

## Components for L-Acoustics



### Adapter Heads

L-Acoustics Syva  
adapter head | 9kg  
L-Acoustics A10  
adapter head | 12 kg  
L-Acoustics Kiva II  
adapter head | 22 kg  
L-Acoustics Kara  
adapter head | 22 kg



### Extensions

100 cm | 6.4 kg  
80 cm | 5.4 kg  
60 cm | 4.4 kg



BP800



BP1000

### Baseplates

BP800 | 35 kg  
BP1000 | 61 kg

## L-Acoustics Syva



### Baseplate

The L-Acoustics Syva adapter head can be combined with the baseplate BP800.



### Top

L-Acoustics Syva

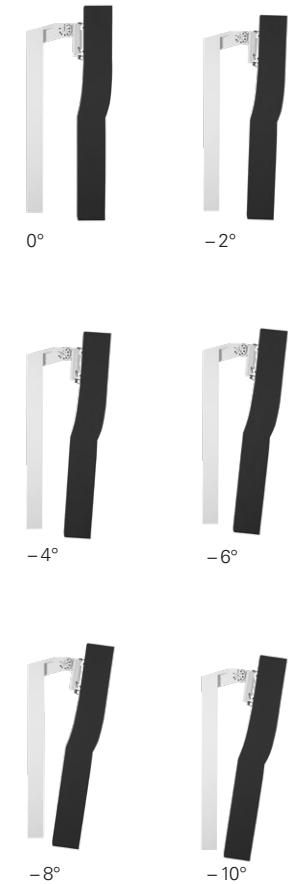
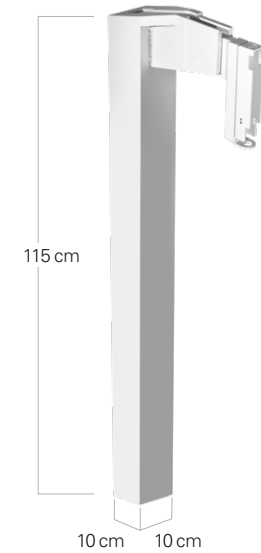
### BP800

L-Acoustics Syva Low and Sub

## Adapter Head

for L-Acoustics Syva

Color: RAL 7035



The L-Acoustics Syva colinear system is fixed to the L-Acoustics Syva wall mount using the Excellent Line adapter head for the L-Acoustics Syva. The vertical tilt can be set to 0°, -2°, -4°, -6°, -8° or -10°. Horizontal rotation is achieved through the L-Acoustics Syva wall mount.

## L-Acoustics Kiva II and Kara



### Baseplate

The L-Acoustics Kiva II and Kara adapter heads can be combined with the baseplate BP1000.



**Top**  
L-Acoustics Kiva II

**BP1000**  
L-Acoustics SB15



**Top**  
L-Acoustics Kara

**BP1000**  
L-Acoustics SB18

## Adapter Head

for L-Acoustics Kiva II and Kara

**Color:** RAL 7035, RAL 9005



Depending on the required application, a fitting for the L-Acoustics Kiva II or Kara can be attached to the adapter head. The maximum load is 180 kg. The lowest linear array element can be tilted by up to 15° in steps of 1°.



**mounting device for L-Acoustics Kiva II**

**mounting device for L-Acoustics Kara front and rear mounting**



**Tilt**  
The lowest linear array element can be tilted by up to 15° in steps of 1°.



## L-Acoustics A10 Focus/Wide



### Baseplate

The L-Acoustics A10 adapter heads can be combined with the baseplate BP1000.



### Top

L-Acoustics A10 Focus/Wide

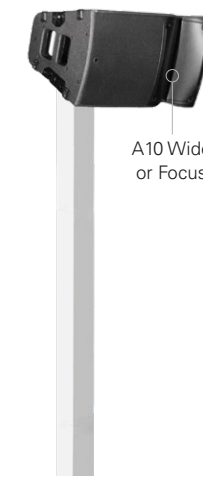
### BP1000

L-Acoustics SB15

## Adapter Head

L-Acoustics A10 Focus/Wide

Color: RAL 7035



A10 Wide  
or Focus



2 x A10 Wide  
or Focus



2 x A10 Focus

A10 Wide

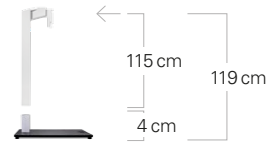
The A10 adapter head can accommodate max. three A10 Focus and/or A10 Wide elements or a combination of three elements. Only a vertical arrangement is possible. The permissible total height, including the speakers, is 400cm. The mounting plate can be tilted in steps of 5°. The tilt angles range from 0° (no tilt) to 45° (max. tilt / max. down tilt). The first A10 element is fixed with an Allen key M10 screw.

For more detailed information please see [www.excellent-line.com/l-acoustics](http://www.excellent-line.com/l-acoustics)

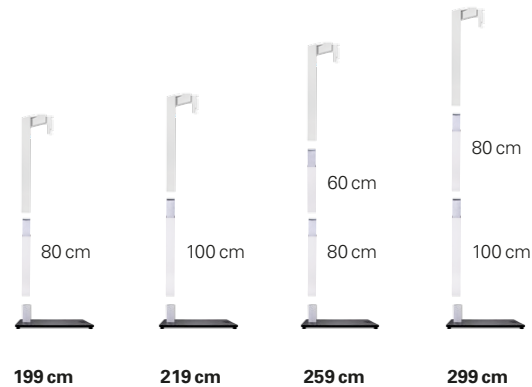
The high-quality aluminium stand consists of several square tubes measuring 10 × 10 cm at lengths of 60 cm, 80 cm and 100 cm and has a specially adapted L-Acoustics adapter head for Syva, Kiva II, Kara or A10 systems.

The square tubes are hollow and can be used for cabling. The system can be positioned at a variety of heights thanks to the different tube lengths.

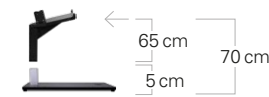
## Height Options for L-Acoustics Syva



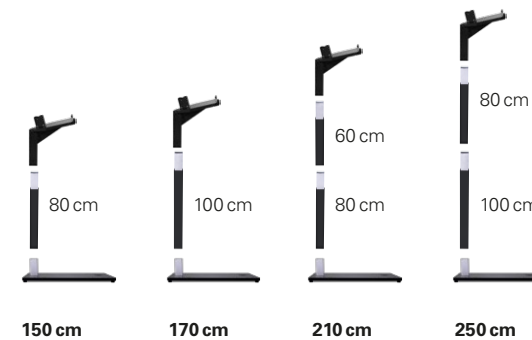
**Baseplate and Mount**  
for L-Acoustics Syva



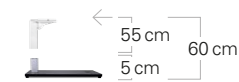
## Height Options for L-Acoustics Kiva II und Kara



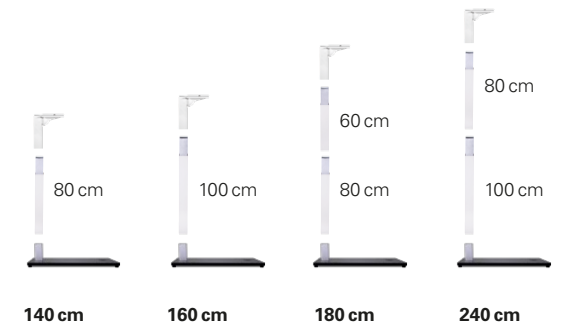
**Baseplate and Mount**  
for L-Acoustics Kiva II and Kara



## Height Options for L-Acoustics A10 (Focus/Wide)



**Baseplate and Mount**  
for L-Acoustics A10 (Focus/Wide)



The BP800 baseplate can support L-Acoustics Syva Low and Sub subwoofers and has eight additional drill holes for fixed mounting or mounting to supporting structures.

The BP1000 baseplate can support L-Acoustics SB15 and SB18 subwoofers and has eight additional drill holes for fixed mounting or supporting structures.

## Baseplate BP800

**Color:** RAL 9005



**L-Acoustics Syva  
Low and Sub**

**L-Acoustics  
SB15**

## Baseplate BP1000

**Color:** RAL 9005



**L-Acoustics  
SB15**

**L-Acoustics  
SB18**

Let us advise you on the capabilities of  
Excellent Line Alpha:  
+49 (0) 54 52–97 33 10

The components of Excellent Line Alpha are manufactured  
and distributed in Germany.



H.O.F. ALUTEC Metallverarbeitungs GmbH & Co. KG  
Brookstrasse 8  
D-49497 Mettingen

T +49 (0) 54 52–97 33 10  
F +49 (0) 54 52–97 33 19

[sales@h-of.de](mailto:sales@h-of.de)

Excellent Line products are compatible with L-acoustics speakers, but they have not been approved or developed in collaboration with L-Acoustics  
All technical details and images correspond to the current state of the product line; technical improvements may follow without notification. Printed in October 2018.

The Excellent Line is a developing brand,  
so we welcome your feedback:  
[vision@excellent-line.com](mailto:vision@excellent-line.com)

